

## Surface Preparation, And Application

### Surface Preparation

- The Surface Should be smooth, dry clean, free from dust and stains.
- Apply 2 coat of Jagdamba Silk Shine primer, and wait for 12 hours or until coat of primer gets dry.



### Material Preparation

- Pour Content of 1 Pack (980 grams) in a clean bucket.
- Add 4-5 Litre Water.

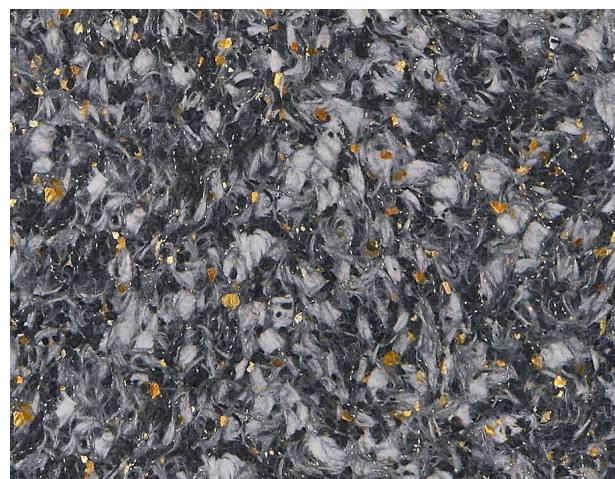
- Mix Water and material with your hands, until the mixture turns into thick paste.
- Soak the material for 2 hours.

(Please avoid partial mixing of packages, if you need several packets for one wall then mix them at one. One surface should be cover with the material of same mixture.)

### Material Application

Use Acrylic Trowel to apply the mixed material, maintain thickness of material throughout the wall. Apply small amounts of the mixed material from one Mixture evenly throughout the surface.

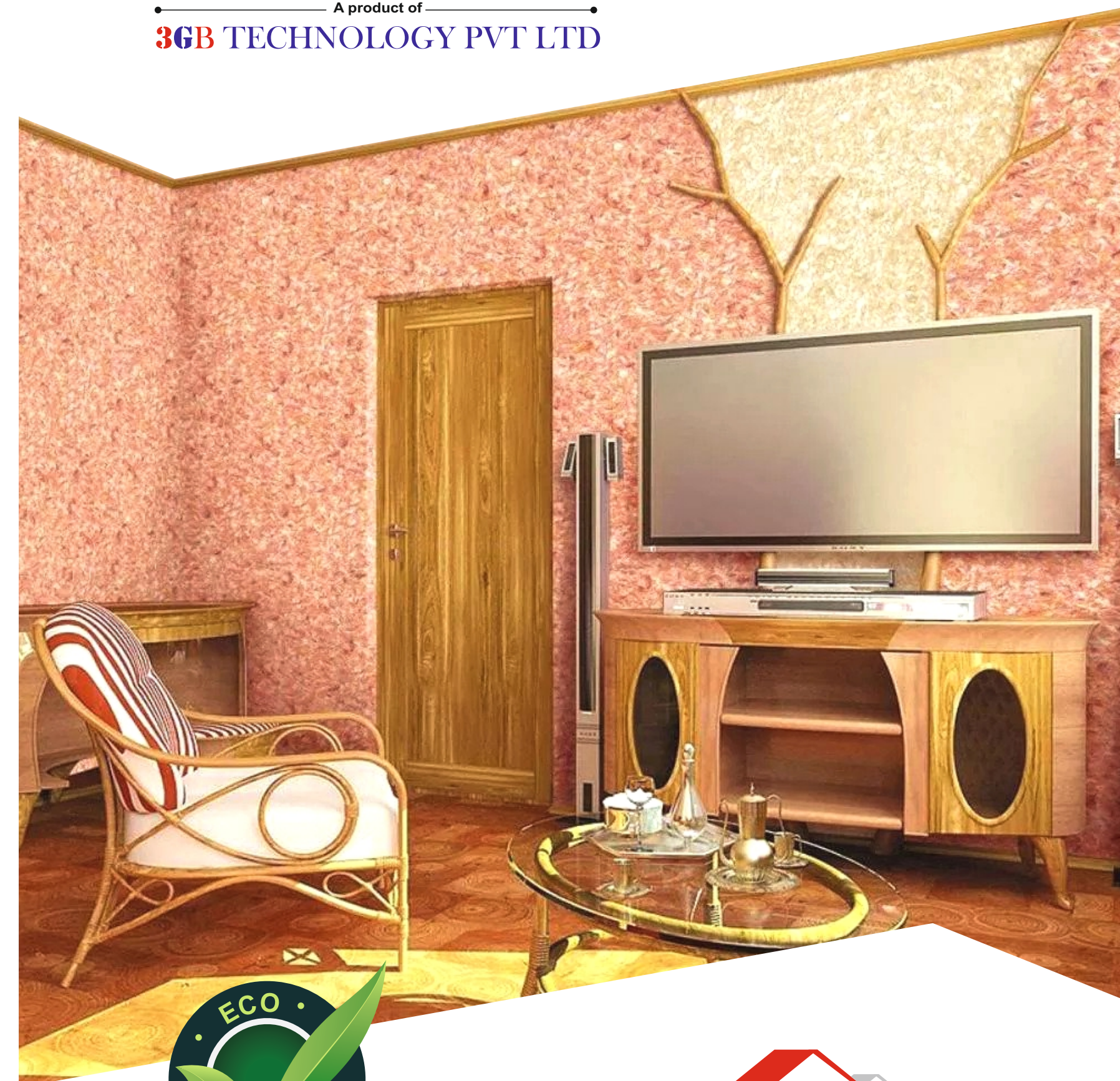
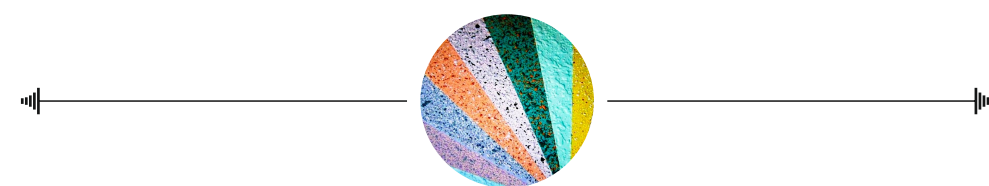
- The material should be used within 36 hours after soaking.
- The room temperature should be not lower than 12 degrees Celsius.
- The level of humidity should not exceed 85%



### About Us-

**JSS** Textures is specialised in manufacturing of wall covering and decorative products for interior surfaces.

**JSS** is one of our unique product which stands at a different place in market. We always try our best to provide superior quality and trendy products. We have 1000+ satisfied customer all over India.



### ABOUT JSS LIQUID WALLPAPER

**JSS** is used for covering Interior Walls and ceiling surfaces. This is composed of silk, Cotton, Mineral and cellulose. A wide variety of Shades are available which allow our customers to turn their ideas into extraordinary designs.

### This Product Combines Following Properties

**Ease in application :-** Just mix it with water and after 20-30 minutes, it is ready for application.

**Odourless :-** This does not give any kind of smell.

**Elastic :-** JSS is so elastic that it hides all minor cracks, uneven surfaces and joints.

**Moisture Control :-** The moisture rate is corresponding to its base, it does not change its appearance with weather conditions, if your interior wall absorbs moisture during monsoons, then it will stick as like normal and get recover when the moisture in wall decreases.

**Fire Resistant :-** This product is inflammable, incombustible, and does not create smoke.

**Noise Control :-** The silky texture reduces the tendency of noise to pass through it.

**Eco friendly :-** The raw materials used in manufacturing of this product are nature friendly, there is no hazardous substance present in this product.

**Permeable :-** The silky texture allows air to pass through, so your walls can easily breathe.

**Vibrant Colors :-** Every single shade present in our catalogue are different from each other which matches everyone's choice.

**Fragrance :-** This Wallpaper filled with silk cotton and rose scent







JSS-01



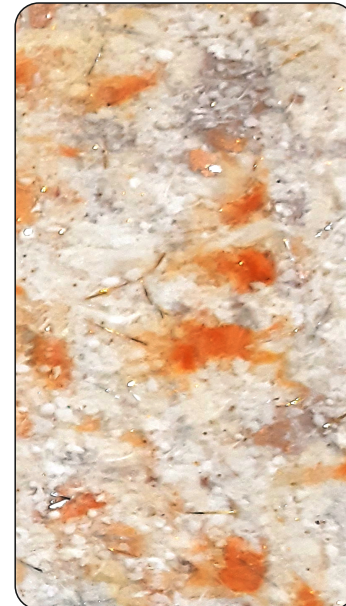
JSS-02



JSS-03



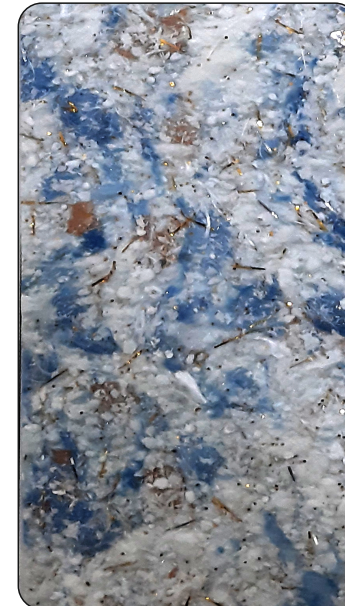
JSS-04



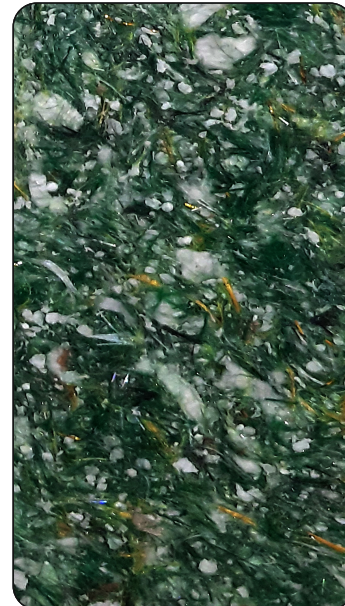
JSS-05



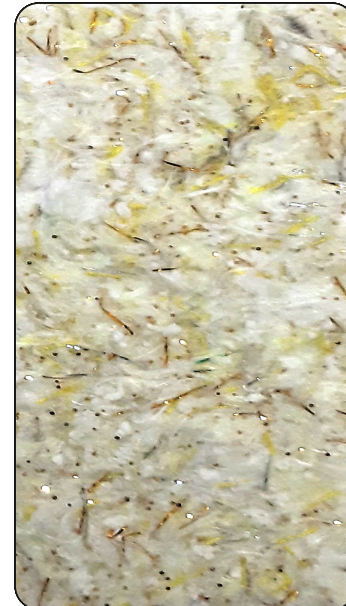
JSS-06



JSS-07



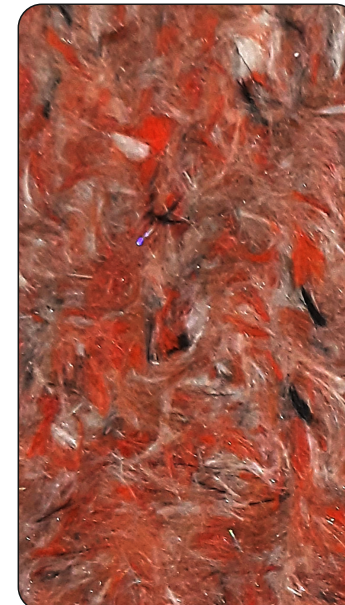
JSS-08



JSS-09



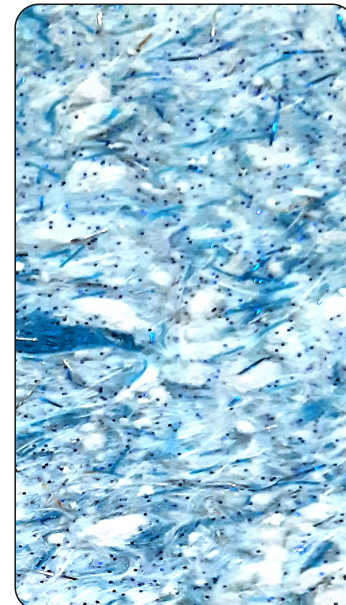
JSS-10



JSS-11



JSS-12



JSS-13



JSS-14



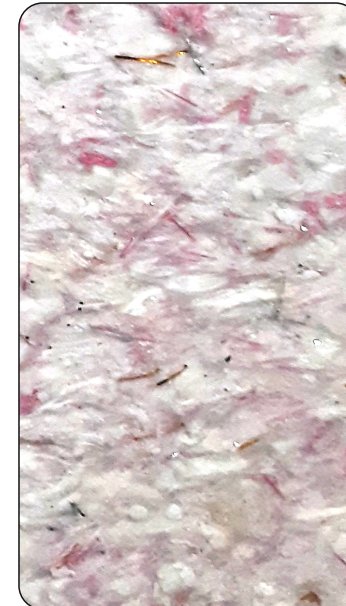
JSS-15



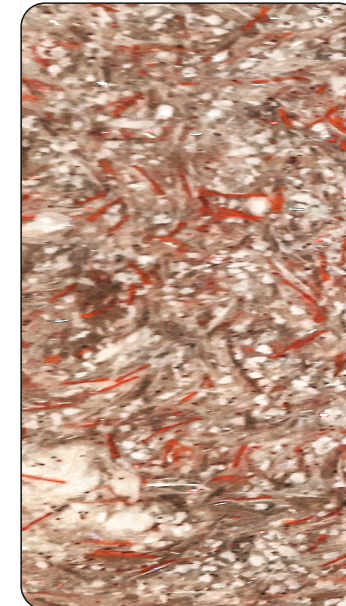
JSS-16



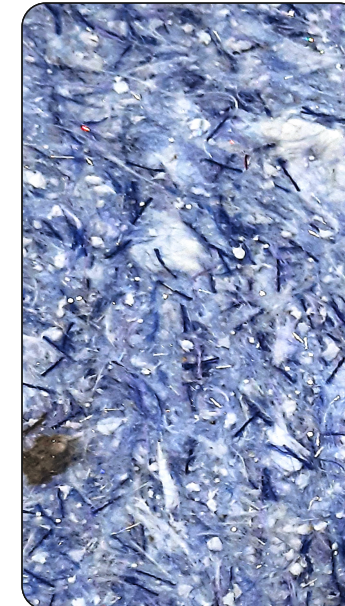
JSS-17



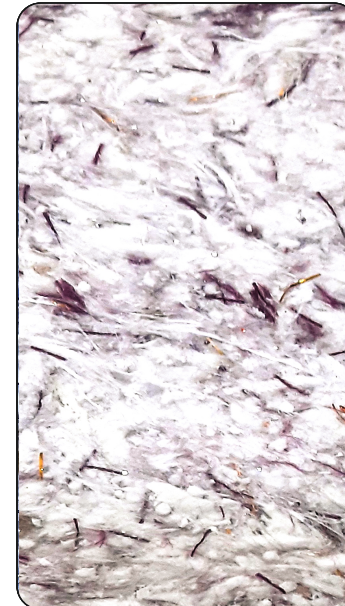
JSS-18



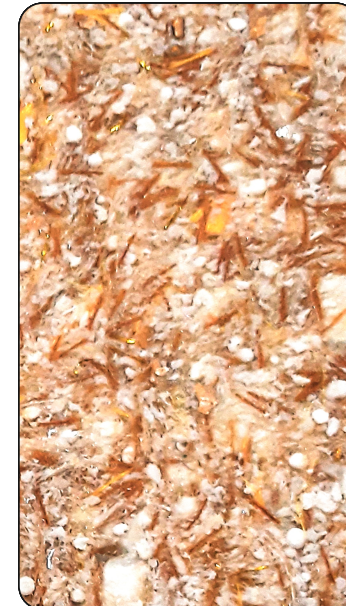
JSS-19



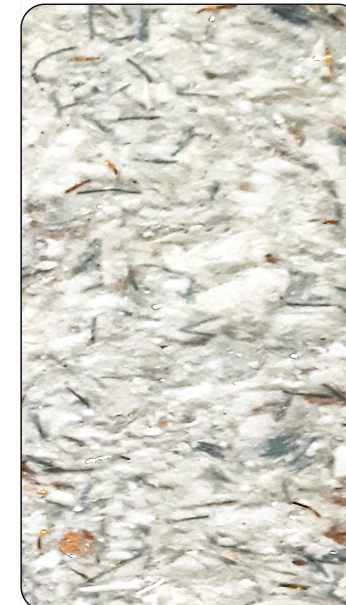
JSS-20



JSS-21



JSS-22



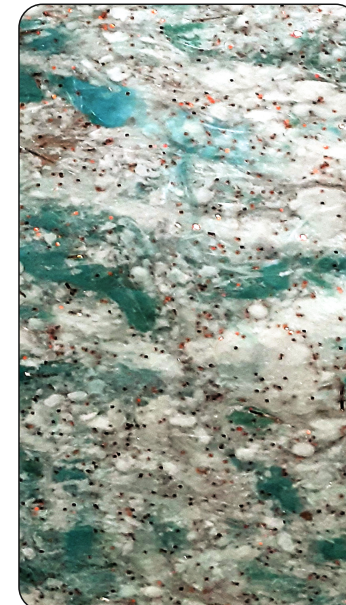
JSS-23



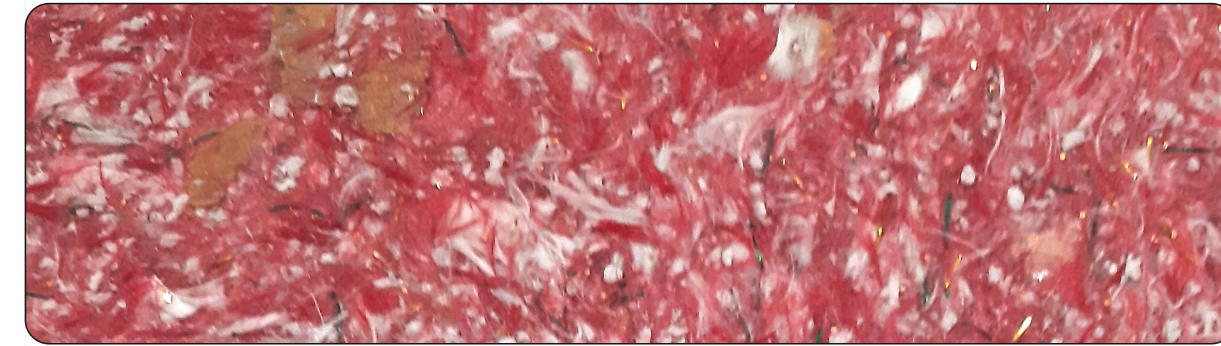
JSS-24



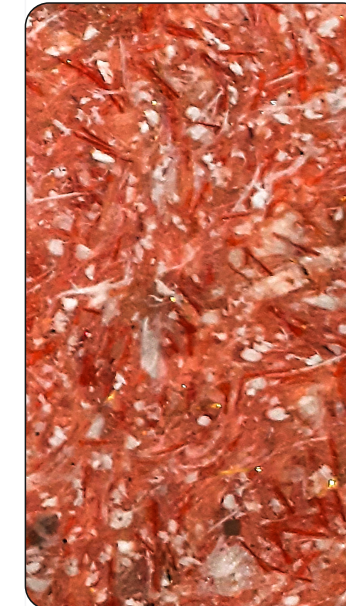
JSS-25



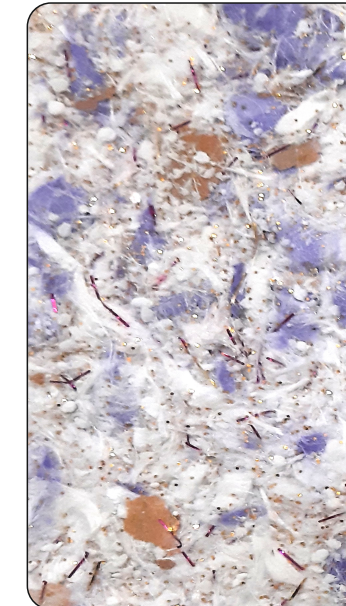
JSS-26



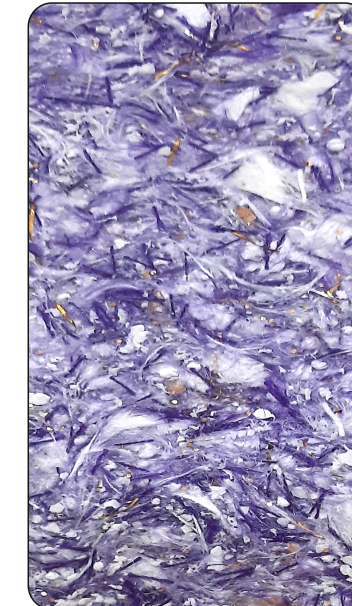
JSS-27



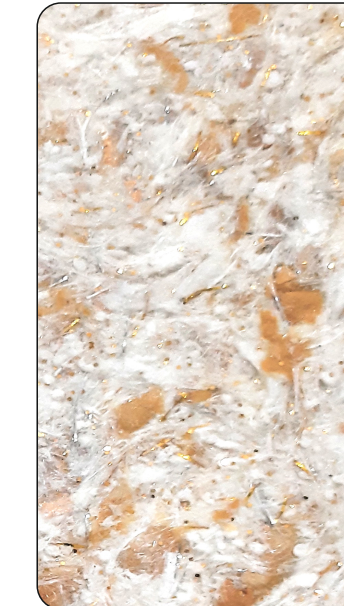
JSS-27



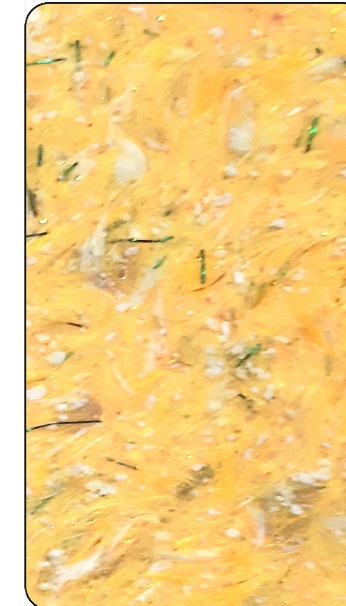
JSS-28



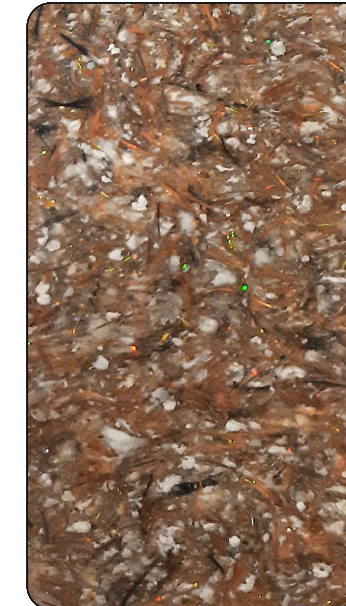
JSS-29



JSS-30



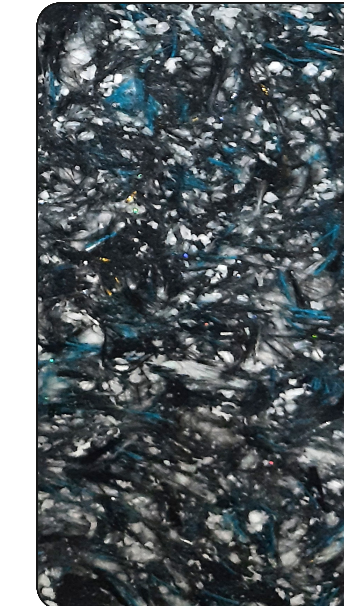
JSS-31



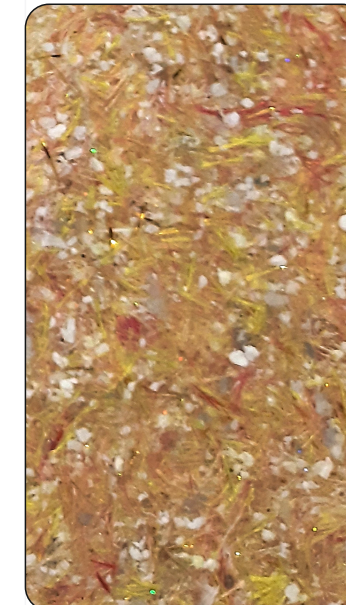
JSS-32



JSS-33



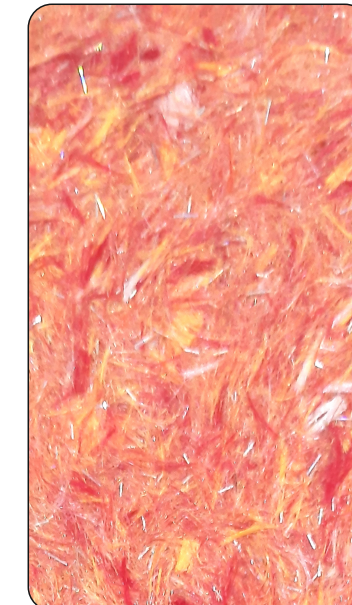
JSS-34



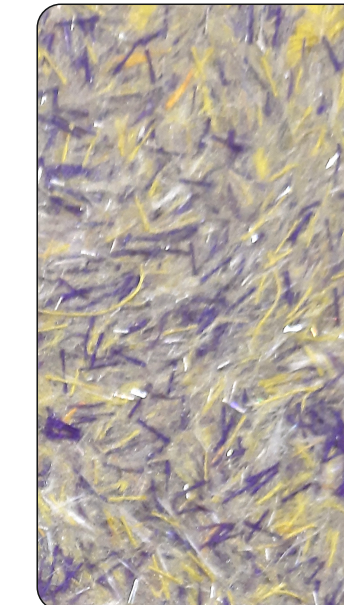
JSS-35



JSS-36



JSS-37



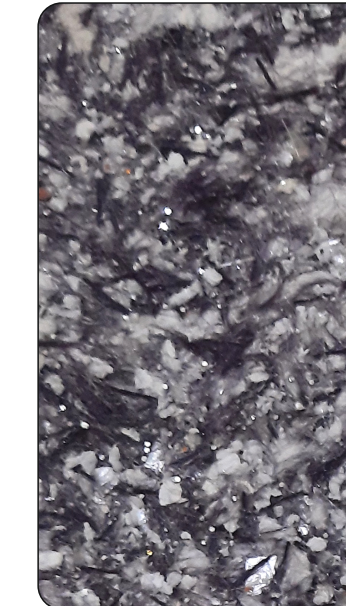
JSS-38



JSS-39



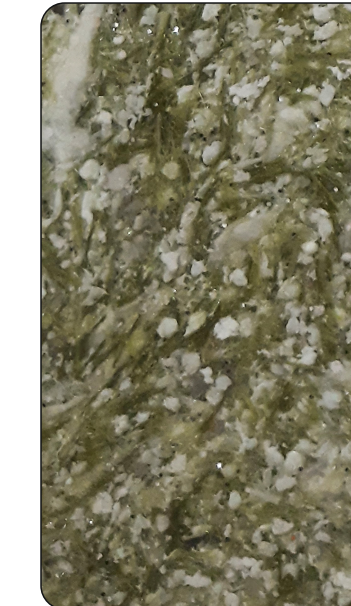
JSS-40



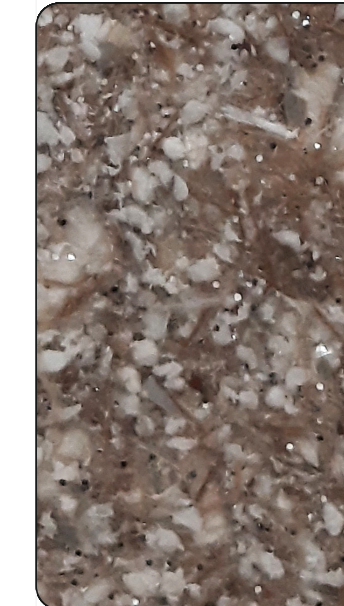
JSS-41



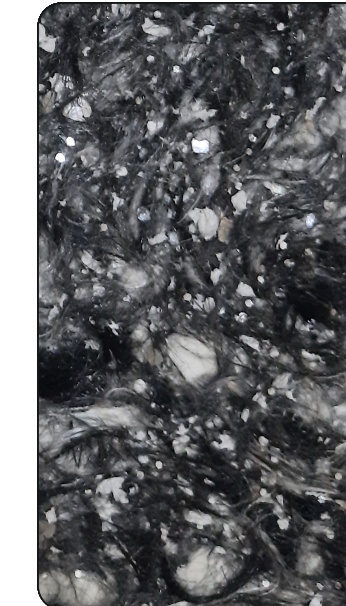
JSS-42



JSS-43



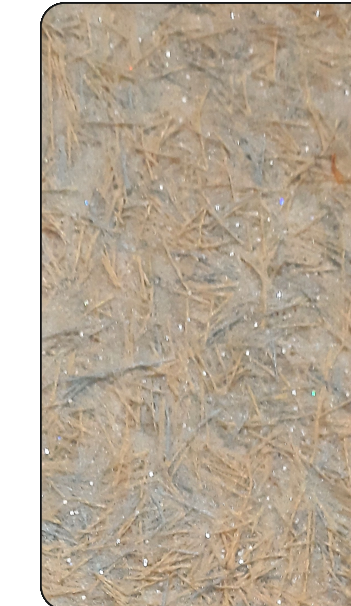
JSS-44



JSS-45



JSS-46



JSS-47



JSS-48



JSS-49



JSS-50



JSS-51